



American Recovery Reinvestment Act (ARRA)



Sherri LeBas, P.E.
Deputy Secretary

May 29, 2009

Topics of Discussion

- History of ARRA
- Final Formula Allocation
- Criteria included in Act for formula allocations
- Parameters for project identification
- Competitive Grants

History of ARRA

- Rumors
 - November & December 2008
 - \$700 to \$800 million
- President Obama's transition team
 - Requested list of projects that are ready to go
 - Submitted list January 8, 2009

ARRA Projects

\$1.314 billion

Design - Bid - Build

\$640 million

- I-49 North (Section B, D, and H)
- Larose Bridge Bridge Replacement
- LA 28 (Reconstruct Existing Lanes)
- Safety (Cable or other Median Barrier)
- Safety (Pavement Markings) Safety
- I-55 Pavement Rehabilitation
- I-10 at Causeway – Phase 2
- US 11 @ I-12
- Prospect Street Bridge
- I-49 (Lafayette Parish Line to LA 10)
- Safety (Guardrail Repairs)
- Safety (Roadside Improvements)
- US 165 (LA 101 to Allen Parish Line)
- Off System Bridges
- US 167 (Quitman to Lincoln Parish Line)
- US 167 (Winn Parish Line to Jonesboro)
- US 425 (US 65 to Foules)
- I-20 Rest Area at Mound
- I-55 Rest Area at Kentwood
- LA 1 (LA 173 to LA 169)
- I-20 (Tallulah to Mound)
- I-210 (Calcasieu River Bridge to I-10)
- US 80 (2.1 miles west of Richland Parish Line to Start)
- I-10 (widen Veterans to Clearview)

List submitted to President Obama's transition team,
January 8, 2009

ARRA Projects

\$1.314 billion

Design - Build

\$674 million

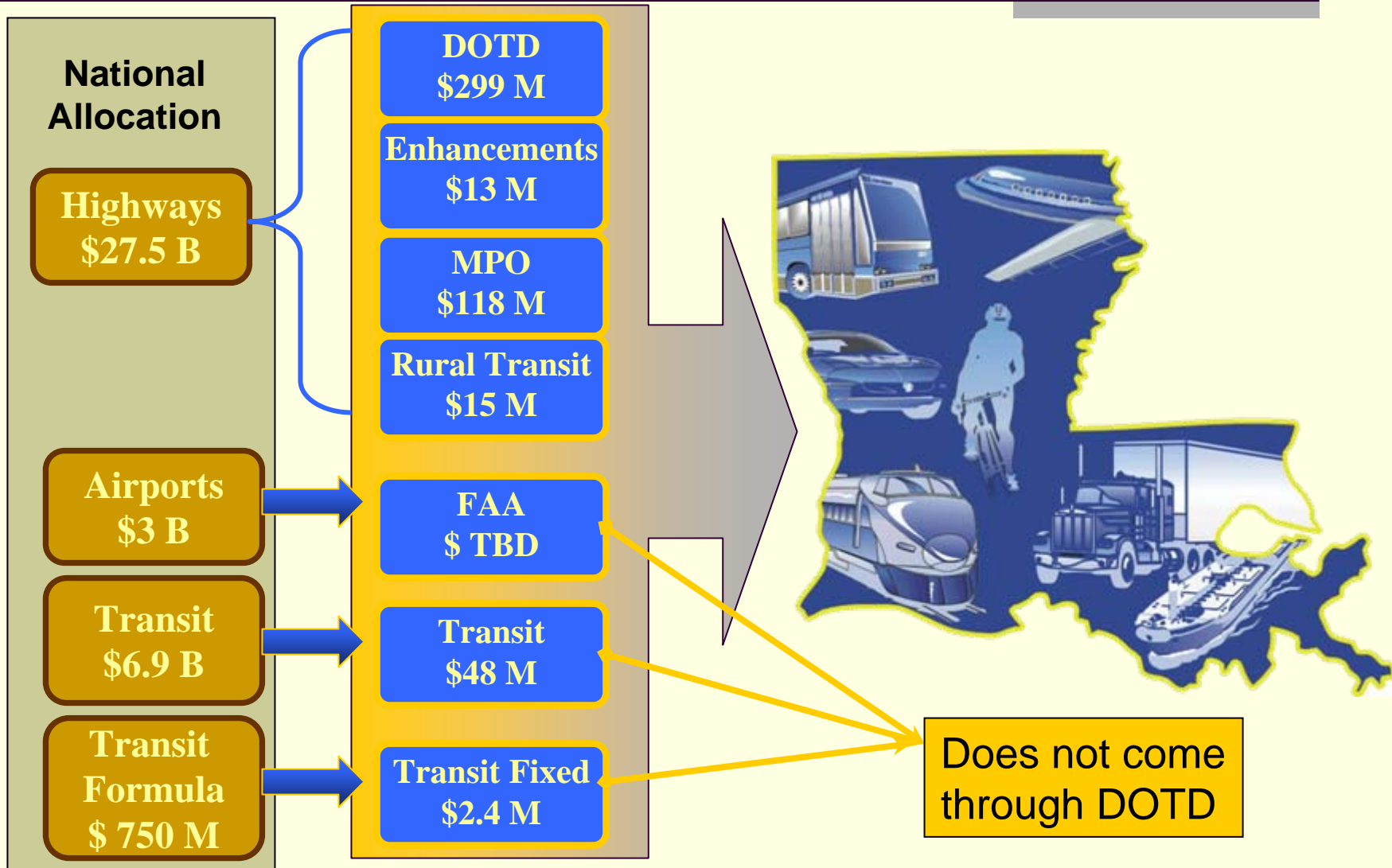
- LA 1 (Phase 2) (Lafourche Parish)
- ITS (Intelligent Transportation System)
- I-12 (US 11 to Northshore/Airport Road)
- I-49 (US 90/LA 85 Interchange)
- I-12 (Range to Walker)
- I-10 (Siegen to Highland Rd.)

History of ARRA

- House Bill (viewed as the major driver)
 - \$471 million
 - DOTD: \$351 million
 - MPOs: \$99 million
 - Enhancement Projects: \$21 million
 - No ports or Intermodal Projects
- Senate Bill
 - Slightly less than \$351 million for DOTD
 - Ports could be eligible
- Draft Final Bill after Conference
 - February 13, 2009
 - Ports are eligible

ARRA (Final)

Formula Based Allocation



Federal ARRA Bill

Criteria Included in the Act for Projects

■ Highways

■ DOTD discretionary (\$299 M)

- 50% obligated in 120 days (deadline: June 29, 2009)
 - DOTD has met this deadline
- 50% obligated in 12 months after apportionment (deadline: March 2, 2010)
- Desirable completion time: 3 years

■ Transportation Enhancement (\$13 M)

- 50% obligated in 120 days (deadline: June 29, 2009)
- 50% obligated in 12 months after apportionment (deadline: March 2, 2010)
- Desirable completion time: 3 years

Parameters for Project identification

- Considered projects on major corridors
 - Meets all federal regulatory requirements
 - Consistent with Louisiana Statewide Transportation Plan
 - Could meet the schedule established by Congress
 - No required ROW
 - High volume and high cost roads and bridges
 - Projects with national significance
 - Statewide economic impacts
 - Geographic distribution
 - Supports existing investment of state dollars

ARRA Projects (Final List) \$219 million

Design - Bid - Build

▪ I-49 North (Section ✓ B & D)	\$42 million
✓ Larose Bridge Replacement	\$36 million
✓ LA 28 (Reconstruct Existing Lanes)	\$3 million
✓ I-10 at Causeway – Phase 2	\$75 million
✓ Off System Bridges	\$10 million
✓ US 167 (Quitman to Lincoln Parish Line)	\$7 million
✓ US 425 (US 65 to Foules)	\$6 million
✓ LA 59 @ I-12	\$4 million
✓ I-59 @ US 11/LA 1090	\$6 million
✓ US 11 @ I-12	\$6 million
▪ I-210 (Calcasieu River Bridge to I-10)	\$24 million

✓ Funds have been obligated

ARRA Projects (Final List)

\$106 million

Design - Build

- I-49 (US 90/LA 85 Interchange) \$34 million
- I-10 (Siegen to Highland Rd.) \$72 million

Metropolitan Planning Organizations

Formula Allocations

ARRA Bill

Criteria Included in the Act for Projects

- **MPO discretionary (\$118 M)** (Projects must be approved by the MPO Policy Committee)
 - 100% obligated in 12 months after apportionment (deadline: March 2, 2010)
 - Divided among 10 MPOs by formula
 - New Orleans \$ 29.1 million
 - Baton Rouge \$ 13.8 million
 - Shreveport \$ 7.9 million
 - Houma \$ 9.6 million
 - Slidell \$ 9.6 million
 - Monroe \$ 9.6 million
 - Alexandria \$ 9.6 million
 - Covington \$ 9.6 million
 - Lafayette \$ 9.6 million
 - Lake Charles \$ 9.6 million

ARRA Bill

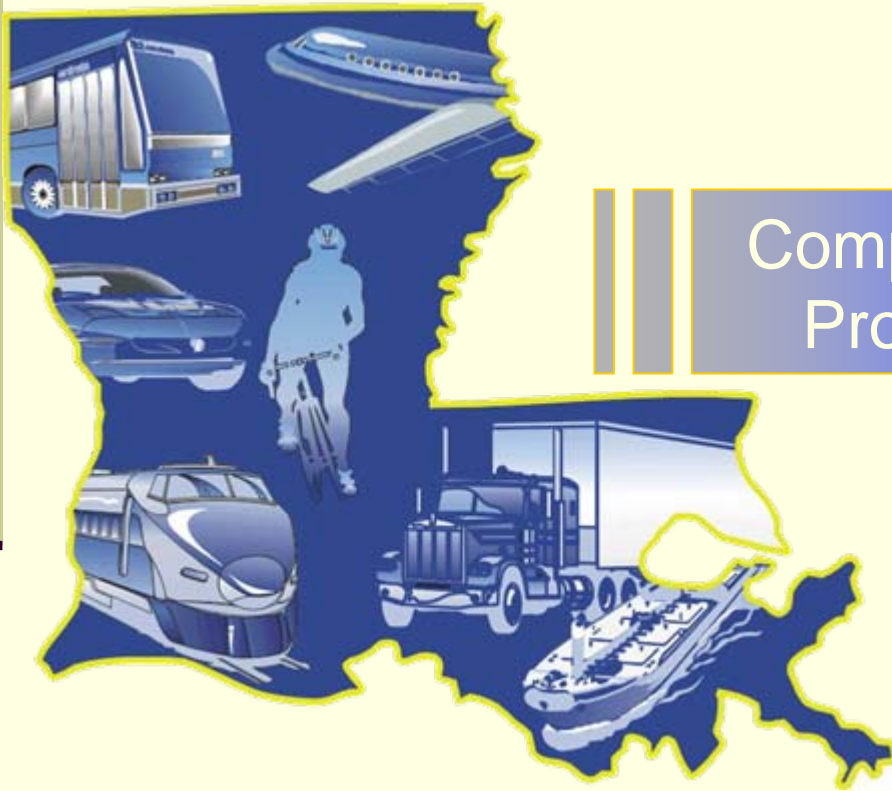
(100% federal - no match required)

■ **Transit Fixed Guideway - Formula**

- \$750 million (formula) - Louisiana's share is \$2.4 million
- For existing fixed guideway infrastructure which includes any transit service that uses exclusive or controlled rights-of-way or rails, entirely or in part. US DOT Secretary has 21 days to apportion funds
- Recipients have 180 days from apportionment date to obligate 50 percent of funds and 12 months to obligate other 50 percent
- These funds administered by FTA directly with RTA

ARRA

Competitive Discretionary Grants



Transit
Fixed
\$ 750 M

Multimodal
\$ 1.5 B

Rail
\$ 8 B

Maritime
\$ 100 M

ARRA Bill

(100% federal - no match required)

■ **Transit Fixed Guideway - Discretionary**

- \$750 million for new fixed guideway infrastructure
- Discretionary grants available through September 30, 2010
- Priority given to projects under construction or are able to obligate within 150 days

ARRA Bill

(100% federal - no match required)

- Rail: \$8 billion – competitive grants
 - Louisiana Share: Unknown
 - Discretionary for High speed rail corridors and intercity passenger rail available through September 30, 2012
 - Requirement for inclusion in State Rail Plan waived

- Maritime: \$100 million - competitive grants
 - Small shipyards, a facility in one geographic location with less than 1,200 employees
 - Available through September 30, 2010
 - 180 days to obligate following distribution to grantees
 - May have some applicability to port infrastructure

ARRA Bill

(100% federal - no match required)

- Multimodal \$1.5 billion competitive grants across all transportation modes except aviation (competitive grant)
 - Projects can be highway or bridge, public transportation, passenger/freight rail, and port infrastructure with a “significant impact on the Nation, a metropolitan area, or a region”
 - Projects must be between \$20 and \$300 million in total costs and no one state can receive more than 20 percent of the funds in this program
 - USDOT Secretary must distribute equitably geographically and balance urban and rural communities
 - **Application is due September 15, 2009.**



Questions

